

THE FUNDAMENTALS OF SLEEP MEDICINE COURSE

28 November - 2 December, 2011

The University of Sydney



THE UNIVERSITY OF
SYDNEY

This course is an intensive introduction to the field of Sleep Medicine. It is essential for all those new to the field and recommended for those who would like to refresh their knowledge base.

OVERVIEW

Sleep disorders are now recognised as a major public health issue across the world, impacting individual health and quality of life, the community at large, and the health system. This has led to the rapid evolution of a new clinical field of Sleep Medicine.

The University of Sydney has been at the forefront of education in Sleep Medicine for over 25 years.

The course draws on a high profile faculty of speakers, many of whom are internationally recognised researchers and leaders in the field. This ensures that the course content is cutting-edge.

FUNDAMENTALS OF SLEEP MEDICINE

The Fundamentals of Sleep Medicine Course offered by the Discipline of Sleep Medicine represents the unification of the University of Sydney and the Woolcock Institute of Medical Research sleep courses.

COURSE STRUCTURE AND DELIVERY

The Fundamentals of Sleep Medicine Course will be held from 28 November to 2 December 2011.

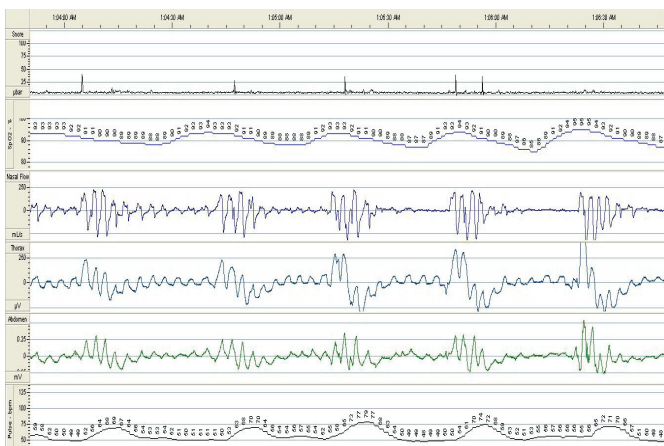
The course program is made up of formal lectures and small group practical sessions, which include "hands on" experience. The course starts from first principles, but also includes latest techniques, recent research findings and up to date clinical practice with lectures by experienced technologists, clinicians and researchers. The practical teaching is structured to take the participants from the basic principles through to advanced concepts.

There is a maximum of 50 places available for full enrolment. The small number ensures that practical groups are of a size that allows all students to participate and obtain the most benefit from the course. Additional attendees may be present for single days of lectures or individual lectures so numbers in the lecture theatres may be greater than 50.

PROFILE OF ATTENDEES

Students include medical graduates (both general practitioners and specialists), nurses, physiotherapists, dentists, sleep technicians and those employed within the sleep industry.

Approximately 50% of students attending this course are starting their career in sleep medicine.



Monday 28 November	Tuesday 29 November	Wednesday 30 November	Thursday 1 December	Friday 2 December
Introduction to Normal Sleep	Physiological Measurement	Insomnia	Acute and Chronic Respiratory Failure	Paediatric Respiratory and Non-Respiratory Sleep Disorders
Public Health Aspects of Sleep Medicine	Sleep Staging and Filters	Drugs and Sleep	Non-Invasive Ventilation	Paediatric Case Studies
Morning Tea	Morning Tea	Morning Tea	Morning Tea	Morning Tea
Physiology of Respiration During Sleep	Respiratory Scoring	Interpreting ECG Abnormalities on PSG	Central Sleep Apnoea	Hypersomnias
Pathophysiology of OSA	Scoring in Infants and Children	CPAP Titration and Follow-up	Ambulatory Monitoring for SDB	MSLT/MWT Studies
Lunch	Lunch	Lunch	Lunch	Lunch
Respiratory Disease and SDB	Sleep Staging Tutorial	Non-CPAP Therapies for OSA	Non-Standard PSG	RBD/PLMD
Cardiovascular Consequences of OSA		Arterial Blood Gas/Lung Function Interpretation	Occupational Health and Medico-Legal Issues in Sleep Medicine	Epilepsy and Sleep
Afternoon Tea	Afternoon Tea	Afternoon Tea	Afternoon Tea	Afternoon Tea
Sleep and the Endocrine System	Respiratory and Sleep Staging Tutorial	CPAP Tutorial	Non-Invasive Ventilation Tutorial	Adult Case Studies
Welcome Function				End of Course Function

Please note that the program is subject to change at short notice

ADMISSION REQUIREMENTS

Applicants from all backgrounds are accepted. No undergraduate degree or experience in the field is required.

Places in the course are limited to allow maximum participation in small group workshops and considerable interest has already been expressed in this course.

COSTS

For full enrolment costs are:

Australian/New Zealand sleep technologists: \$1900

Overseas applicants and sleep/allied professionals: \$2300

Included in this fee is pre-course reading material, all tuition and a USB drive containing lecture material in a PDF format. A printed copy of the lecture material will entail an additional \$50 fee (this is optional). Morning and afternoon tea will be provided. Accommodation and transport to and from the course is not included.

For short term attendance costs are:

Whole day attendance: \$470

Single lecture: \$110

Please email us to request short term attendance.

APPLICATION

All applications are made online at:

<http://sydney.edu.au/medicine/sleep/teaching/professional-development/technology/application>

Once the online application is received a place is held but it is not confirmed until payment is received. The payment form and payment details can also be found at the URL above.

As places will be allocated on a "first come" basis, potential participants are advised to register as soon as possible.

Further information is available at: <http://sydney.edu.au/medicine/sleep/teaching/professional-development/technology/faq>

ORGANISING COMMITTEE

Kerri Melehan, Royal Prince Alfred Hospital

Sally Middleton, Sydney University

Mark Norman, Sydney University

Professor Colin Sullivan, Sydney University

Associate Professor Brendon Yee, Royal Prince Alfred Hospital, Woolcock Institute of Medical Research

Professor Peter Cistulli, Head of Discipline of Sleep Medicine



FOR MORE INFORMATION CONTACT
THE DISCIPLINE OF SLEEP MEDICINE

T: +61 2 9515 7311

F: +61 2 9550 3851

E: sleep.enquiry@sydney.edu.au

<http://sydney.edu.au/medicine/sleep>