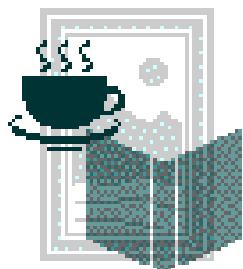


# LIBRARY CORNER AUGUST 2009



***Hmmm...apparently August's birth flower is the gladiolus....?***



## THORAX

### **Qualitative aspects of breathlessness in health and disease**

J Smith, P Albert, E Bertella, J Lester, S Jack, and P Calverley  
*Thorax 2009; 64: 713-718.*

### **Neural respiratory drive in obesity**

J Steier, C J Jolley, J Seymour, M Roughton, M I Polkey, and J Moxham  
*Thorax 2009; 64: 719-725.*

## CHEST

### **Respiratory Function in Patients With Stable Anorexia Nervosa**

Giovanni Gardini Gardenghi, Enrico Boni, Patrizia Todisco, Faust Manara, Andrea Borghesi, and Claudio Tantucci  
*Chest published July 6, 2009*

### **Measurement of Dynamic Hyperinflation After a 6-Min Walk Test in COPD Patients**

Etienne Callens, Sémia Graba, Karine Gillet-Juvin, Mohamed Essalhi, Brigitte Bidaud-Chevalier, Claudine Peiffer, Bruno Mahut, and Christophe Delclaux  
*Chest published July 6, 2009*

### **Childhood Respiratory Illness and Lung Function at Ages 14 and 50 Years**

Peter W. G. Tennant, G. John Gibson, Louise Parker, and Mark S. Pearce  
*Chest published July 6, 2009*

### **Mechanical effects of obesity on airway responsiveness in otherwise healthy humans**

Roberto Torchio, Alessandro Gobbi, Carlo Gulotta, Raffaele Dellaca, Marco Tinivella, Robert E. Hyatt, Vito Brusasco, and Riccardo Pellegrino J Appl Physiol 2009;107 408-416  
<http://jap.physiology.org/cgi/content/abstract/107/2/408?etoc>

### **Bronchodilator effects of exercise hyperpnea and albuterol in mild-to-moderate asthma**

Manlio Milanese, Riccardo Saporiti, Stefano Bartolini, Riccardo Pellegrino, Michele Baroffio, Vito Brusasco, and Emanuele Crimi  
J Appl Physiol 2009;107 494-499  
<http://jap.physiology.org/cgi/content/abstract/107/2/494?etoc>

### **Three-dimensional measurement of alveolar airspace volumes in normal and emphysematous lungs using micro-CT**

Harikrishnan Parameswaran, Erzsebet Bartolak-Suki, Hiroshi Hamakawa, Arnab Majumdar, Philip G. Allen, and Bela Suki  
J Appl Physiol 2009;107 583-592  
<http://jap.physiology.org/cgi/content/abstract/107/2/583?etoc>

### **Respiratory muscle function and activation in chronic obstructive Pulmonary disease**

David K. McKenzie, Jane E. Butler, and Simon C. Gandevia  
J Appl Physiol 2009;107 621-629  
<http://jap.physiology.org/cgi/content/abstract/107/2/621?etoc>

And from NSW

### **Deep inspirations protect against airway closure in nonasthmatic subjects**

David G. Chapman, Norbert Berend, Gregory G. King, Brent E. McParland, and Cheryl M. Salome  
J Appl Physiol 2009;107 564-569  
<http://jap.physiology.org/cgi/content/abstract/107/2/564?etoc>

And from NZ, courtesy of David R-R

[Responses of FEV6, FVC, and FET to inhaled bronchodilator in the adult general population](#)

**Kainu A, Lindqvist A, Sarna S, Lundback B, Sovijarvi A**

*Respiratory Research* 2009, **10**:71 (28 July 2009)

[[Abstract](#)] [[Provisional PDF](#)]

Alison