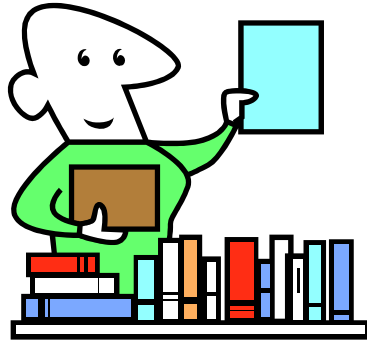


Library Corner November 2006



Don't forget to send in any Articles you find along the way!

AJRCCM Nov 2006

Gender Specific Manifestations of Lofgren's Syndrome

Johan Grunewald and Anders Eklund

Am. J. Respir. Crit. Care Med. 2006; published ahead of print on October 5, 2006

Childhood Chest Illness and the Rate of Decline of Adult Lung Function Between Ages 35 and 45 Years

Agnes E Marossy, David P Strachan, et al.

Am. J. Respir. Crit. Care Med. 2006; published ahead of print on October 5, 2006

The Predisposition to Inspiratory Upper Airway Collapse during Partial Neuromuscular Blockade

Matthias Eikermann, Florian M Vogt, et al.

Am. J. Respir. Crit. Care Med. 2006; published ahead of print on October 5, 2006

ERJ Nov 2006

Inspiratory fraction and exercise impairment in COPD patients GOLD stages II-III

A. L. P. Albuquerque, L. E. Nery, et al.

Eur Respir J 2006 28: 939-944.

Effect of primary-care spirometry on the diagnosis and management of COPD

Eur P. P. Walker, P. Mitchell, F. Diamantea, C. J. Warburton, and L. Davies

Respir J 2006 28: 945-952.

The effect of *Pseudomonas aeruginosa* on pulmonary function in patients with bronchiectasis
G. Davies, A. U. Wells, S. Doffman, S. Watanabe, and R. Wilson
Eur Respir J 2006 28: 974-979.

Driving ability in sleep apnoea patients before and after CPAP treatment: evaluation on a road safety platform
S. Mazza, J-L. Pépin, B. Naëgelé, et al.
Eur Respir J 2006 28: 1020-1028.

Breath condenser coatings affect measurement of biomarkers in exhaled breath condensate
P. P. Rosias, C. M. Robroeks, et al.
Eur Respir J 2006 28: 1036-1041.

Relevance of pharmacokinetics and pharmacodynamics of inhaled corticosteroids to asthma
H. Derendorf, R. Nave, A. Drollmann, F. Cerasoli, and W. Wurst
Eur Respir J 2006 28: 1042-1050.

CHEST

The effects of Body Mass Index on Lung Volumes
R.L.Jones, M.U.Nzekwu
Chest 2006 130 (3):

Happy Reading!
Alison